

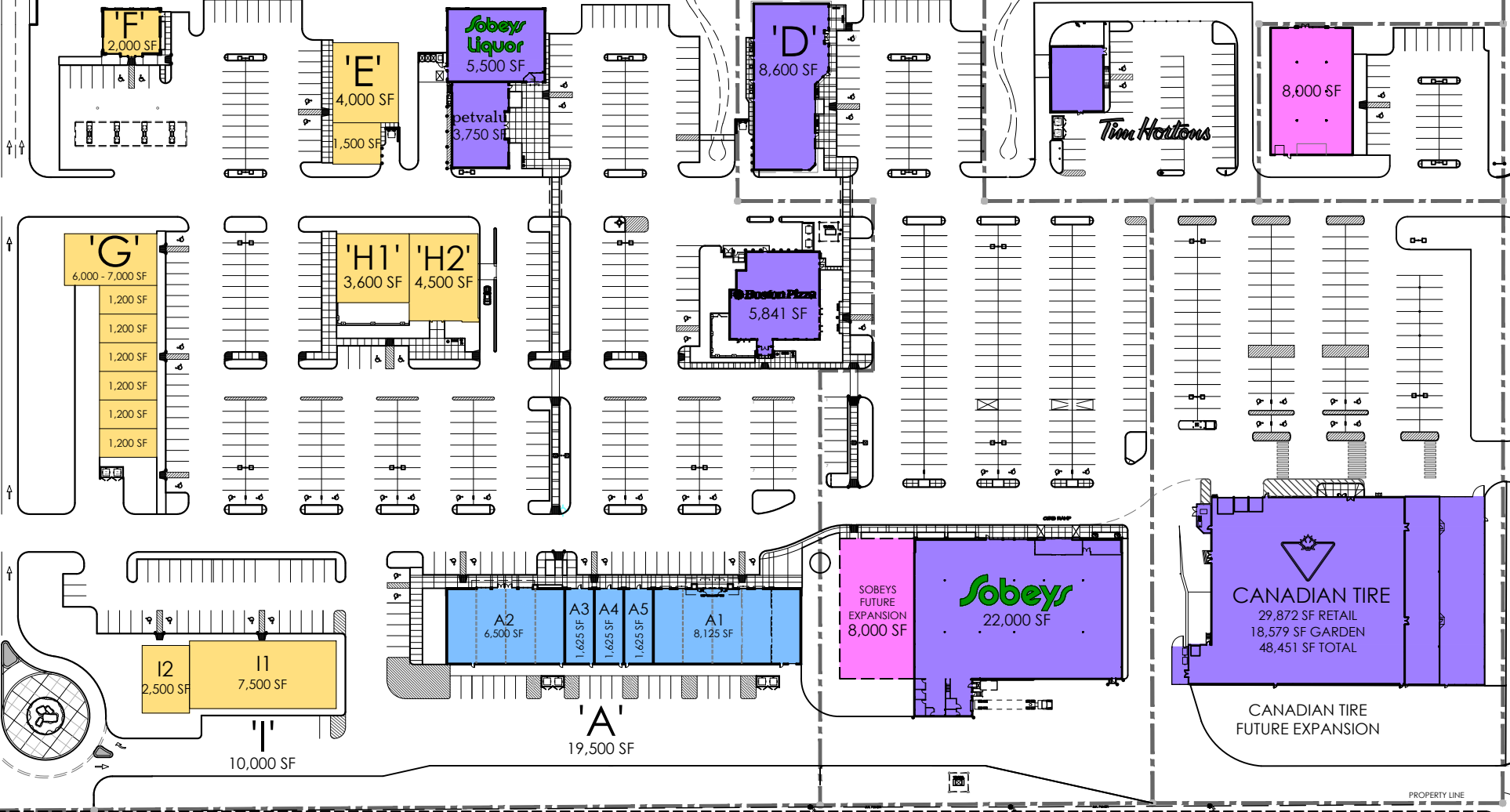
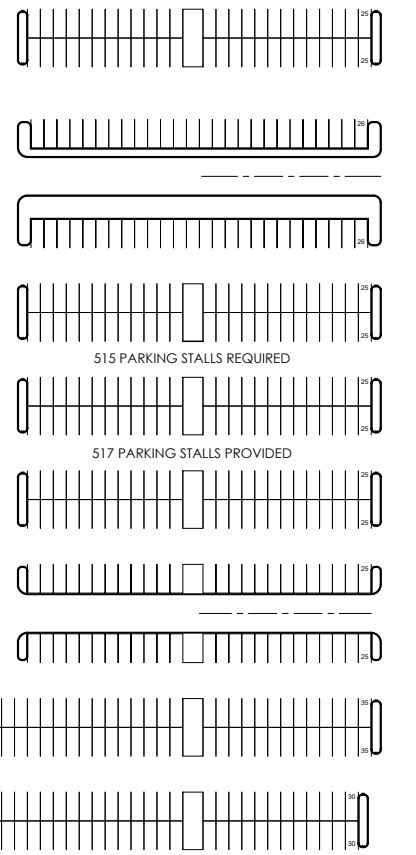
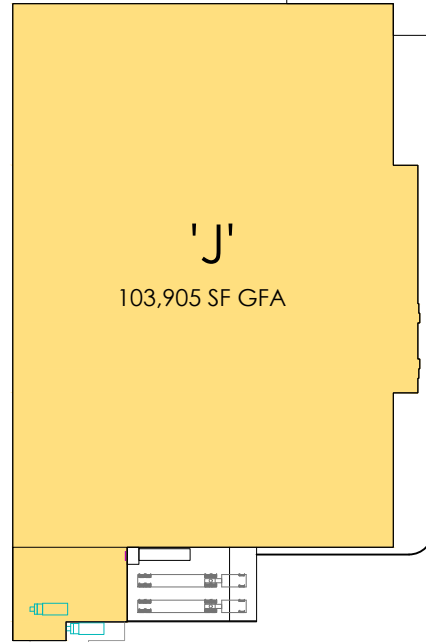
9th AVENUE

HWY.5 (8th AVENUE)

HWY.5 (8th AVENUE)

PECK ROAD

MR1



MR1
MUNICIPAL RESERVE
STORM POND

C.N.R.

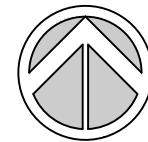
LEGEND

- AVAILABLE
- 2019-2020 DEVELOPMENT
- FUTURE DEVELOPMENT
- COMPLETED

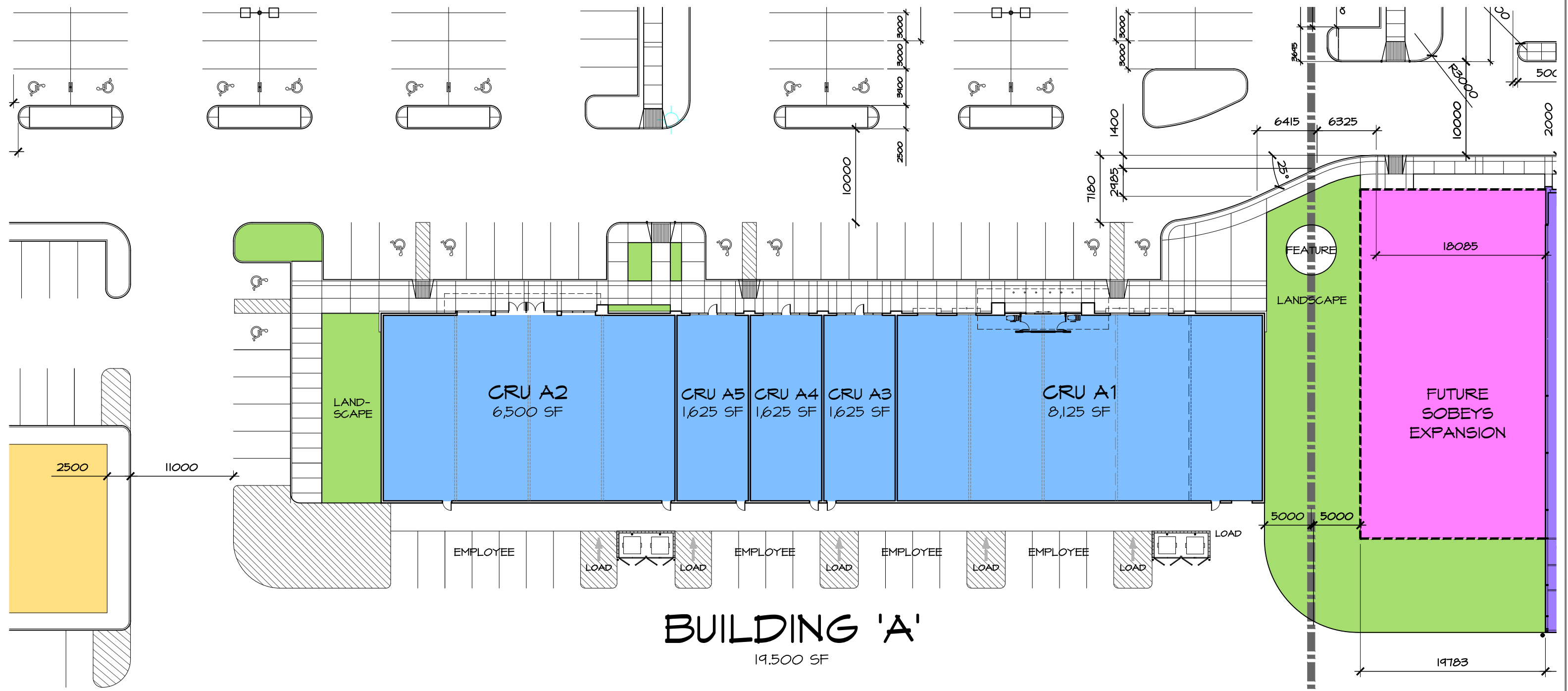


OVERALL DEVELOPMENT PLAN
HUMBOLDT, SASKATCHEWAN

15 NOV. 2018
PROJECT: 11.018



LAND[architecture]STUDIO
info@landstudio.ca 1 403.701.1749 landstudio.ca
355 Woodfield Road SW,
Calgary Alberta Canada
T2W 3V8

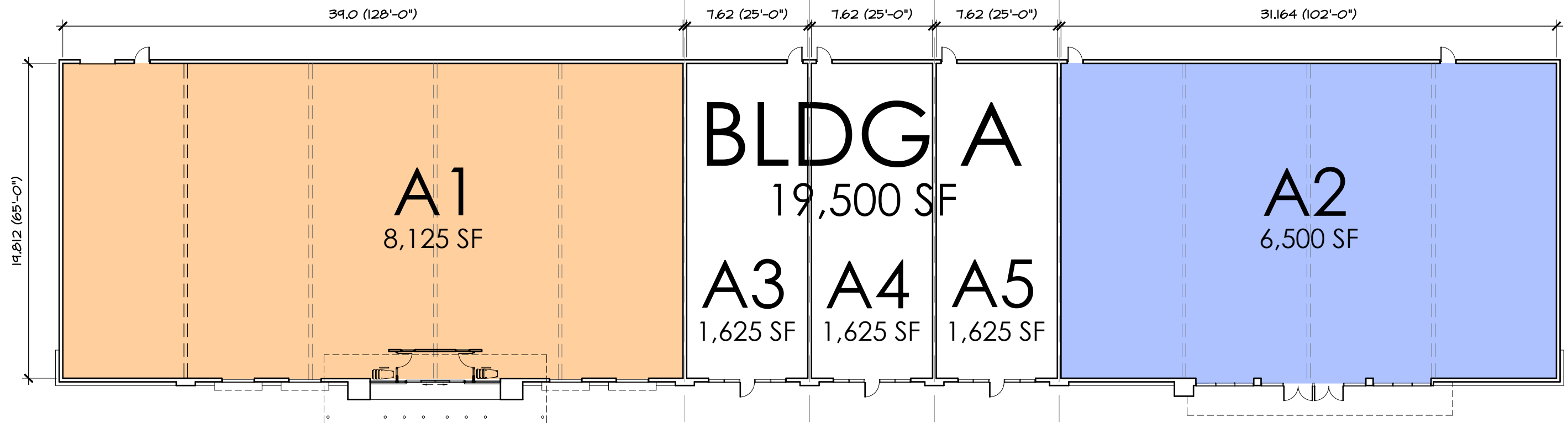


BUILDING 'A'
19,500 SF

FUTURE
SOBEYS
EXPANSION



1 NORTH ELEVATION
1.00 NTS



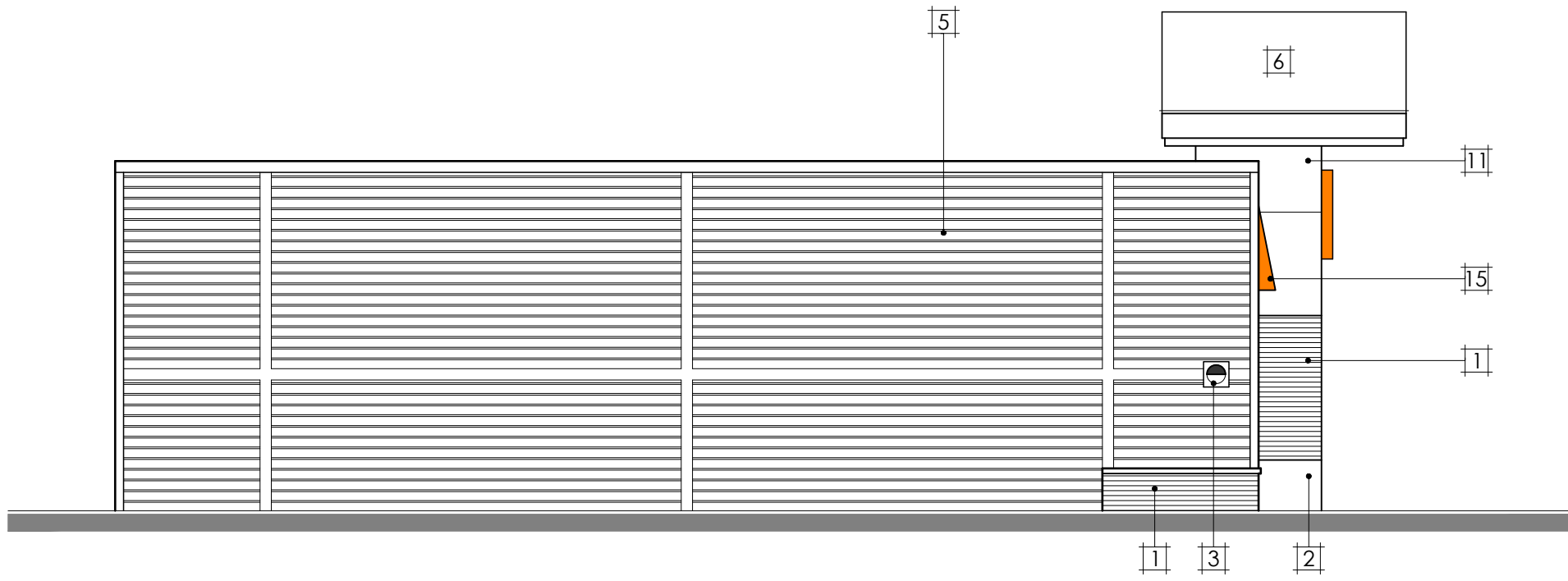
2 PLAN
1.00 NTS



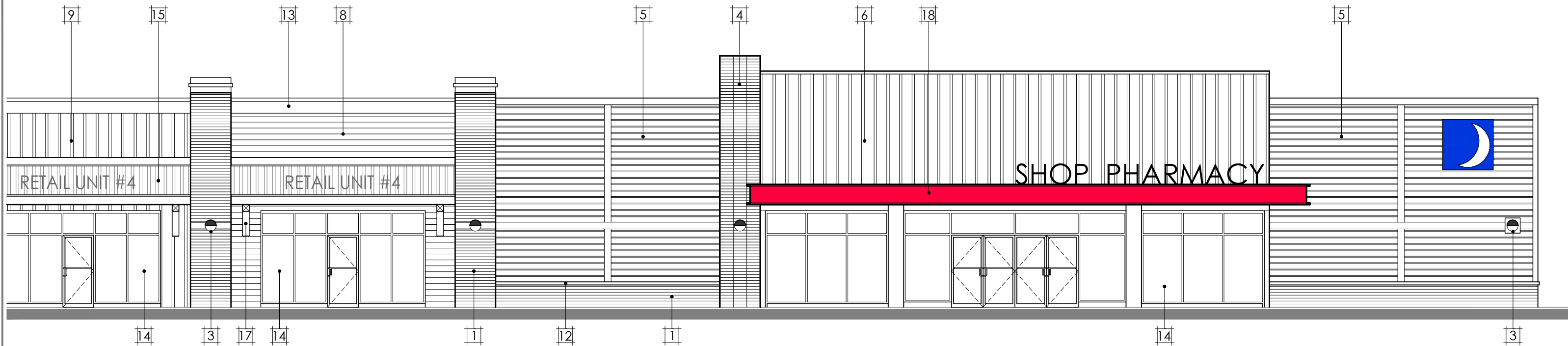
1 NORTH ELEVATION (EAST PORTION) - MARK'S ANCHOR w/CORNER EXPOSURE
1.00 NTS

MATERIALS - CONCEPTUAL / TO BE COORDINATED WITH ARCH.

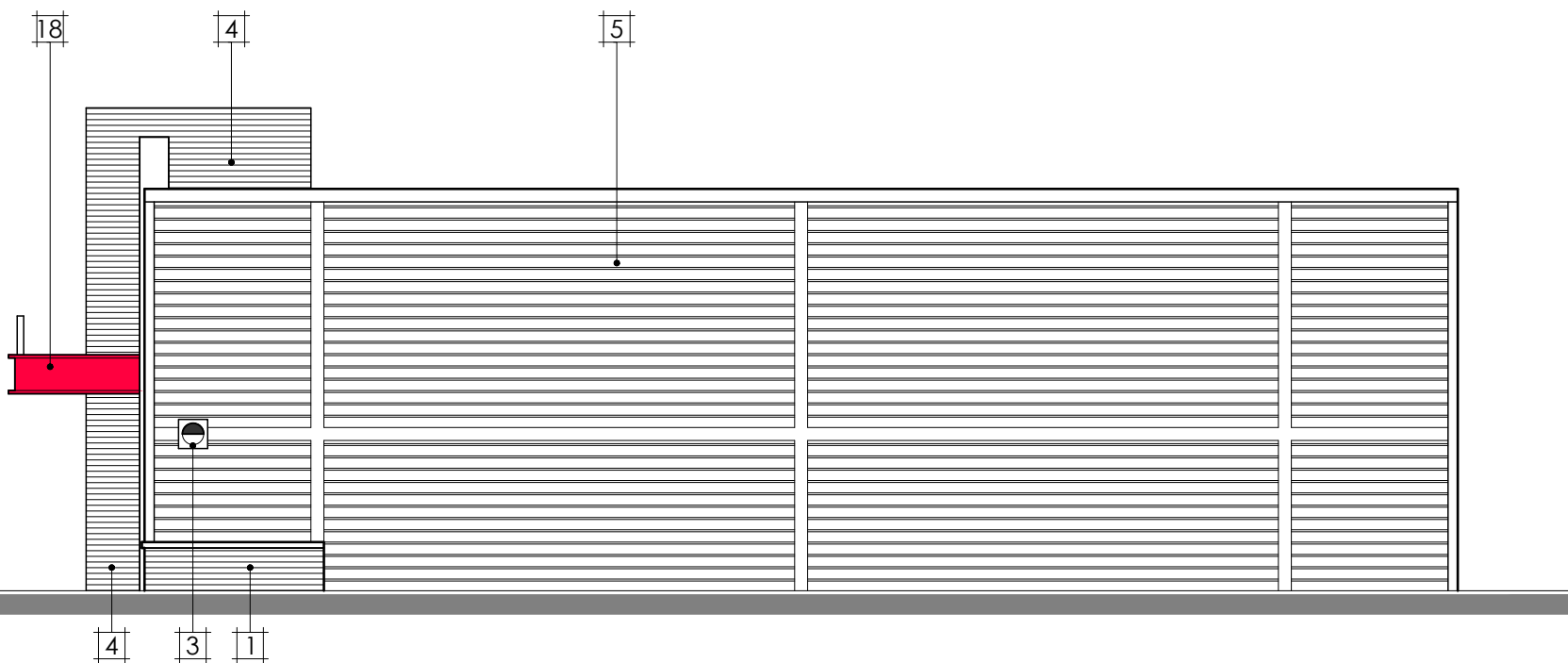
- 1 STANDARD BRICK - COLOUR TO MATCH EXISTING (RED TONES)
- 2 CONCRETE BASE - SMOOTH FINISH / STEEL FORM
- 3 SURFACE MOUNT LIGHTING - KENALL, MILLENIUM ROUND MR13EL
- 4 STEEL CLADDING - 56161 CAMBRIDGE WHITE
VIC WEST "CL-622-SR" or "DIAMOND RIB EAST"
TO EMULATE TRADITIONAL BOARD AND BATTEN APPEARANCE
- 5 STEEL CLADDING - GALVANIZED
VIC WEST "CL-622-SR" or "DIAMOND RIB EAST"
TO EMULATE TRADITIONAL BOARD AND BATTEN APPEARANCE
- 6 STEEL CLADDING - 56072 CHARCOAL
VIC WEST "CL-622-SR" or "DIAMOND RIB EAST"
TO EMULATE TRADITIONAL BOARD AND BATTEN APPEARANCE
- 7 FIBER CEMENT LAP SIDING - WOODTONE "RUSTIC SERIES" - 565 CASCADE SLATE
- 8 FIBER CEMENT LAP SIDING - WOODTONE "RUSTIC SERIES" - WHITE GRANITE
- 9 FIBER CEMENT VERTICAL PANEL - WOODTONE "RUSTIC SERIES" - 565 CASCADE SLATE
- 10 FIBER CEMENT LAP SIDING - HARDIEPLANK LAP SIDING - ARCTIC WHITE
- 11 FIBER CEMENT PANLES - HARDIEPANEL - NIGHT GRAY
- 12 TYNDALL STONE STANDARD SILL DETAIL - 90mm x 150mm X LENGTH
c/w SLOPE AND DROP DETAIL - REFER TO GILLIS QUARIES COMMERCIAL BROCHURE
- 13 CORNICE DETAIL - HARDIE TRIM (SMOOTH)
BUILT-UP ASSEMBLY INCLUDING HARDIE TRIM "CROWN MOULDING"
- 14 ALUMINUM WINDOW AND ENTRIES - BLACK FINISH
- 15 AWNINGS
- 16 METAL PANEL - MARK'S ORANGE
- 17 DECORATIVE KNEE BRACE



2 EAST ELEVATION
1.00 NTS



1 NORTH ELEVATION (WEST PORTION) - PHARMACY ANCHOR w/CORNER EXPOSURE
1.00 NTS



2 WEST ELEVATION
1.00 NTS

MATERIALS - CONCEPTUAL / TO BE COORDINATED WITH ARCH.

- 1 STANDARD BRICK - COLOUR TO MATCH EXISTING (RED TONES)
- 2 CONCRETE BASE - SMOOTH FINISH / STEEL FORM
- 3 SURFACE MOUNT LIGHTING - KENALL, MILLENIUM ROUND MR13EL
- 5 STEEL CLADDING - GALVANIZED
VIC WEST "CL-622-SR" or "DIAMOND RIB EAST"
TO EMULATE TRADITIONAL BOARD AND BATTEN APPEARANCE
- 6 STEEL CLADDING - 56072 CHARCOAL
VIC WEST "CL-622-SR" or "DIAMOND RIB EAST"
TO EMULATE TRADITIONAL BOARD AND BATTEN APPEARANCE
- 7 FIBER CEMENT LAP SIDING - WOODTONE "RUSTIC SERIES" - 565 CASCADE SLATE
- 8 FIBER CEMENT LAP SIDING - WOODTONE "RUSTIC SERIES" - WHITE GRANITE
- 9 FIBER CEMENT VERTICAL PANEL - WOODTONE "RUSTIC SERIES" - 565 CASCADE SLATE
- 10 FIBER CEMENT LAP SIDING - HARDIEPLANK LAP SIDING - ARCTIC WHITE
- 11 FIBER CEMENT PANLES - HARDIEPANEL - NIGHT GRAY
- 12 TYNDALL STONE STANDARD SILL DETAIL - 90mm x 150mm X LENGTH
c/w SLOPE AND DROP DETAIL - REFER TO GILLIS QUARIES COMMERCIAL BROCHURE
- 13 CORNICE DETAIL - HARDIE TRIM (SMOOTH)
BUILT-UP ASSEMBLY INCLUDING HARDIE TRIM "CROWN MOULDING"
- 14 ALUMINUM WINDOW AND ENTRIES - BLACK FINISH
- 15 AWNINGS
- 16 METAL PANEL - MARK'S ORANGE
- 17 DECORATIVE KNEE BRACE
- 18 STEEL BEAM (COLOUR DEPENDANT ON TENANT
w/ CUT SIGNAGE LETTERS ABOVE (WHITE)
- 19 STANDARD BRICK - MEDIUM GRAY (STACKED PATTERN)